



Surveillance Product Lines

Indoor Box Cameras
Fixed Dome & Cube Cameras
Outdoor Tube Cameras
Outdoor Dome Cameras
IP Video Encoders & Decoder
Video Management Software

Outdoor Cameras

GXV3610_HD/GXV3610_FHD

Day/Night HD Fixed Dome IP Camera



- H.264 ONVIF compliant infrared HD (720p and 1080p)
- IP66 weatherproof
- 1/3" 1.2M and 3.1M pixel CMOS sensor with excellent wide dynamic range
- Day/night mode with light sensor and mechanical IR_CUT
- Integrated Power-over-Ethernet (802.3af)
- Supports e-PTZ function on Chrome, Firefox and IE for video preview

GXV3662_HD/GXV3662_FHD

Vandal-Resistant & Weatherproof HD IP Camera



- H.264 ONVIF compliant HD (720p and 1080p)
- Vandal-resistant, tampering proof, IP66 weatherproof
- 1/3" 1.2M and 3.1 pixel CMOS sensor
- Excellent wide dynamic range and low light sensitivity
- Day/night mode with light sensor and mechanical IR_CUT
- Integrated Power-over-Ethernet (802.3af)
- Integrated fan
- Flexible installation/mounting options
- Support for 2-way audio paging and SIP/VoIP

| Specifications | GXV3610_HD/3610_FHD | GXV3662_HD/3662_FHD |
|----------------------------------|---|---|
| Video Compression | H.264, JPEG, Motion JPEG | |
| Image Sensor | Aptina 1.2 & 3.1 Megapixel 1/3", CMOS Sensor | Aptina 1.2 & 3.1 Megapixel, 1/3" CMOS sensor |
| Lens | 1/3", M12 MEGA, f=3.6mm, F1.8 | 1/3", f=3.3-12mm, DC-IRIS |
| Max Video Resolution | 1280 x 960 | 2048 x 1536 |
| Audio In/Out Port | 3.5mm Line-Out | Yes, Line-in & Line-Out |
| PoE | Yes | |
| Alarm Input/Output | N/A | Input: Vin< 15V; Output: 125VAC/0.5A, 30VDC/2A, Normal Open |
| Microphone and Speaker | Built-In Microphone, SIP/VoIP with G.711 codec | N/A |
| Mechanical IR_CUT | Yes | |
| Network Port | 10M/100M Network Port with Integrated PoE | |
| Pre-/post Alarm Buffer/Snapshots | 24MB (GXV3610: 8MB) Buffer, Event-triggered snapshots sent via Email/FTP, Stored in SD Card (GXV3662) | |
| Operating Temperature | -20°C ~ 50°C (-4°F ~ 122°F) | -30°C ~ 50°C (-22°F ~ 122°F) |
| Multi-streaming-rate | Yes | |
| Security | Optional date/time watermark, HTTPS, Password | |

Outdoor Cameras

GXV3672_HD/3672_HD_36



Outdoor Day/Night & Weatherproof HD (720p) IP Camera

- H.264 ONVIF compliant infrared HD (720p)
- IP66 weatherproof
- 1/3" 1.2M pixel CMOS sensor with excellent wide dynamic range
- Day/night mode with light sensor and mechanical IR_CUT
- Integrated Power-over-Ethernet (802.3af)
- Supports e-PTZ function on Chrome, Firefox and IE for video preview

GXV3672_FHD/GXV3672_FHD_36



Outdoor Day/Night & Weatherproof Full HD (1080p) IP Camera

- H.264 ONVIF compliant infrared full HD (1080p)
- IP66 weatherproof
- 1/3" 3.1M pixel CMOS sensor with excellent wide dynamic range
- Day/night mode with light sensor and mechanical IR_CUT
- Integrated Power-over-Ethernet (802.3af)
- Supports e-PTZ function on Chrome, Firefox and IE for video preview

GXV3674_HD_VF/GXV3674_FHD_VF



Outdoor Day/Night Vari-Focal HD (720p) IP Camera

- H.264 ONVIF compliant infrared HD (720p)
- 2.8mm-12mm Vari-Focal lens with DC-IRIS
- IP66 weatherproof
- 1/3" 1.2M & 3.1M pixel CMOS sensor with excellent wide dynamic range
- Day/night mode with light sensor and mechanical IR_CUT
- Integrated Power-over-Ethernet (802.3af)
- Supports e-PTZ function on Chrome, Firefox and IE for video preview

| Specifications | GXV3672_HD/ 3672_HD_36 | GXV3672_FHD/3672_FHD_36 | GXV3674_HD/FHD_VF |
|----------------------------------|--|---|--|
| Video Compression | H.264, JPEG, Motion JPEG | | |
| Image Sensor | Aptina 1.2 Megapixel 1/3" CMOS Sensor | Aptina 3.1 Megapixel 1/3" CMOS Sensor | Aptina 1.2 & 3.1 Megapixel 1/3" CMOS Sensor |
| Lens | 1/3", M12 MEGA, f=8mm, F1.8 (f=3.6mm, F2.0 for 3672_HD_36) | 1/3", M12 MEGA, f=8mm, F1.8 (f=3.6mm, F2.0 for 3672_HD_36) | 1/3", MEGA, f=2.8-12mm, F1.4 |
| Max Video Resolution | 1280 x 960 | 2048 x 1536 | 2048 x 1536 |
| Audio In/Out Port | 3.5mm Line-in & Line-out | | |
| PoE | Yes | | |
| Microphone, Speaker | N/A | | |
| Mechanical IR_CUT | Yes | | |
| Network Port | 10M/100M Network Port with Integrated PoE | | |
| Pre-/post Alarm Buffer/Snapshots | HD Models: 8MB / FHD Models: 3MB, Alarm Buffer, Snapshots Triggered by Event, Sent via Email/FTP | | |
| Operating Temperature | -20°C ~ 50°C (-4°F ~ 122°F) | | |
| Multi-streaming-rate | Yes | | |
| Security | Optional date/time watermark, HTTPS, Password | | |

Indoor Cameras

GXV3611_HD



Indoor HD (720p) Fixed Dome IP Camera

- H.264 ONVIF compliant HD (720p)
- 2M pixel Aptina CMOS sensor
- Integrated Power-over-Ethernet (802.3af)
- Support for 2-way audio paging and SIP/VoIP
- Integrated microphone and speaker
- Supports e-PTZ function on Chrome, Firefox and IE for video preview

GXV3651_FHD



Full High Definition (1080p) IP Camera

- H.264 ONVIF compliant Full HD (1080p)
- Advanced 1/2.5" 5M pixel CMOS sensor
- Integrated IR_CUT and light sensor for low light and night condition
- Embedded Image Sensor Processing (ISP) technology
- Support for 2-way audio paging and SIP/VoIP
- Integrated Power-over-Ethernet (802.3af)
- Alarm and audio inputs & outputs, RS485 connection
- Onboard backup available via USB 2.0 port and SD slot
- Support e-PTZ function on Chrome, Firefox and IE for video preview

| Specifications | GXV3611_HD | GXV3651_FHD |
|----------------------------------|--|---|
| Video Compression | H.264, JPEG, Motion JPEG | |
| Image Sensor | Aptina 2 Megapixel 1/3.2" CMOS Sensor | Aptina 5 Megapixel 1/2.5" CMOS Sensor |
| Lens | 1/3", M12 MEGA, f=2.8mm, F2.0 | 1/2.5", 4.5~10mm, Varifocal Lens, Mega, Manual-Iris, CS (DC-IRIS optional) |
| Max Video Resolution | 1600 x 1200 | 2560 x 1920 |
| Audio In/Out Port | 3.5mm Line-in & Line-out | |
| PoE | Yes | |
| Microphone and Speaker | Built-in Speaker and Microphone; SIP/VoIP with G.711 Codec | Built-in Microphone; SIP/VoIP with G.711 Codec |
| Mechanical IR_CUT | N/A | Yes |
| Alarm Input/Output | Input: Vin<15V; Output: 125VAC/0.5A, 30VDC/2A, Normal Open | |
| Peripheral and Network Ports | 10M/100M Network Port with Integrated PoE, RS485, SD, USB 2.0 (GXV3651_FHD only) | |
| Pre-/post Alarm Buffer/Snapshots | 24MB Alarm Buffer, Event-triggered Snapshots Sent via Email/FTP, & Stored in SD Card (GXV3651_FHD) | |
| Multi-streaming-rate | Yes | |
| Security | Optional date/time watermark, HTTPS, Password | |

Network Video Recorder



GVR3550

Network Video Recorder (NVR)



- Up to 24 channels of 720p or 12 channels of 1080p audio/video real-time recording
- Up to 16TB of storage, up to 4 SATA 3.5" HDDs supported (HDDs not included)
- Automatic Discovery of IP cameras on the local network
- Fully customizable recording rules: time-based, event-based, manual or automatic
- 1 RJ45 10M/100M/1000M network interface
- 1 HDMI and 1 VGA output for full HD local playback
- Alarm-in and Alarm-out port for external integration and future expansion
- 2 USB ports for use of USB keyboard, USB mouse or for system backup
- Live View of up to 16 channels
- Supports all Grandstream cameras, encoders and decoders; and all 3rd party ONVIF cameras
- Supports RAID 0 and RAID 1
- Complete security features including role-based access control, event/system logs and hard drive encryption
- Automatic recording resumption after power failure

| Specifications | GVR3550 |
|--------------------|---|
| Video Recording | Up to 24 channels of 720p (1280x720) or 12 channels of 1080p (1920x1080) |
| Recording Modes | Continuous mode, record by schedule, event trigger, manual |
| Video Compression | H.264 baseline, main or high profile |
| Audio Compression | G.711 (u-law and a-law) |
| Live View | Up to 16 channels of VGA, 4 channels of 720p, or 2 channels of 1080p via HDMI or VGA output |
| Storage | Up to 16TB |
| Storage Redundancy | Backup to USB or network backup |
| RAID | RAID 0 or RAID 1 |
| HDMI | 1 x HDMI |
| VGA | 1 x VGA |
| Line In/Line Out | 1 x RCA input, 1 x RCA output |
| Network Ports | 1 x 10/100/1000Mbps auto-sensing RJ45 port |
| Internal HDD | Up to 4 3.5" SATA hard drives with maximum 16TB storage (HDDs not included) |
| USB ports | 2 x USB 2.0 ports (can be used for USB mouse and keyboard, etc) |
| Security | Optional date/time watermark, HTTPS, Password |

IP Video Encoders & Decoder



GXV3500

1-Channel IP Video Encoder & Decoder

- Single channel video encoder + decoder 2-in-1 combo device
- H.264 ONVIF compliant
- Rich peripheral interfaces
- Composite (RCA) video output to TV
- Line-Out and Mic-in audio connections
- Functions as a Voice/Video Public Announcement System
- Integrated Power-over-Ethernet (802.3af)
- Support for 2-way audio paging using SIP/VoIP

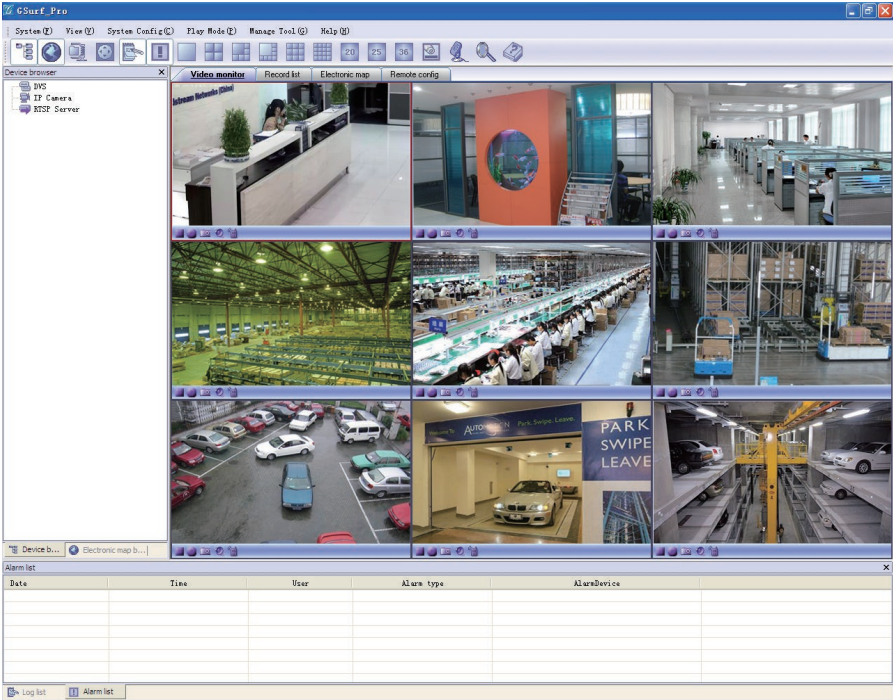


GXV3504

4-Channel Video Encoder

- 4 analog video inputs (BNC)
- H.264 ONVIF compliant 4-channel IP video encoder
- Rich peripheral interfaces
- 4 alarm input & outputs
- USB 2.0 port and SD slot for storage
- Flexible control
- Integrated Power-over-Ethernet (802.3af)
- Support for 2-way audio paging and SIP/VoIP

| Specifications | GXV3500 | GXV3504 |
|--|---|---|
| Video Decoder and TV out | Yes | No |
| Video Compression | H.264, JPEG, Motion JPEG | |
| Max Video Resolution | Encoding D1 Resolution: 704 x 576 (PAL), 704 x 480 (NTSC) Decoding (GXV3500 only): 720 x 576 (PAL), 720 x 480 (NTSC) | |
| Max Frame Rate in Max Video Resolution | Full Rate at D1 Resolution (30fps NTSC, 25fps PAL) | 4 Ports D1 Resolution at 15fps, or 2 Ports D1+2 Ports CIF Resolution at Full Rate, or 4 Ports CIF Resolution at Full Rate |
| Video Input | 1 BNC | 4 BNC |
| Alarm Input/Output | 1 | 4 |
| Audio Input/Output | 3.5mm Line-in & Line-out, 4 BNC for Audio Input (GXV3504 only) | |
| Audio Compression & VoIP | G.711a/u, SIP/VoIP | |
| PTZ Control | Yes | |
| Network Port | 10M/100M Network Port with Integrated PoE | |
| Peripheral Ports | RS485 | RS485, RS232, SD, USB |
| Pre-/post Alarm Buffer/Snapshots | 24MB (8MB for GXV3500) Alarm Buffer, Snapshots Triggered by Event, Sent via Email/FTP | |
| Multi-streaming-rate | Yes | |
| Security | Optional date/time watermark, HTTPS, Password | |





Grandstream Networks, Inc.

CORPORATE HEADQUARTERS

126 Brookline Avenue, 3rd Floor
Boston, MA 02215 USA
Voice: 617-566-9300

info@grandstream.com
www.grandstream.com

Los Angeles Office

1208 John Reed Court
City of Industry, CA 91745 USA
Voice: 626-638-9172

Dallas Office

2301 W Plano Parkway, Suite 208
Plano, TX 75075 USA
Voice: 469-241-0100

Morocco Office

97, Ifni Street 2nd Floor #12
Casablanca, 20000 Morocco
Voice: 212-522-450-742

Venezuela Office

Paseo Cabriaes Ave, Valencia,
Carabobo 2001, Venezuela
Voice: 58-241-823-4744

China Office (Hangzhou)

3rd Floor, Building B, #18 Tang Miao Road
Hua Xing Modern Industrial Park
Hangzhou, China 310012
Voice: 86-571-8684-9591

China Office (Shenzhen)

5th Floor, Langfeng Building
#2 Ke fa Rd, Nan Shen High Tech Industrial
Park (Central) Shenzhen, China 518057
Voice: 86-755-2601-4600

IP Video Encoders & Decoder

Video Management Software



Grandstream Networks, Inc.

CORPORATE HEADQUARTERS
126 Brookline Avenue, 3rd Floor
Boston, MA 02215 USA
Voice: 617-566-9300

info@grandstream.com
www.grandstream.com

Los Angeles Office
1208 John Reed Court
City of Industry, CA 91745 USA
Voice: 626-638-9172

Dallas Office
2301 W Plano Parkway, Suite 208
Plano, TX 75075 USA
Voice: 469-241-0100

Morocco Office
97, Ifni Street 2nd Floor #12
Casablanca, 20000 Morocco
Voice: 212-522-450-742

Venezuela Office
Paseo Cabriales Ave, Valencia,
Carabobo 2001, Venezuela
Voice: 58-241-823-4744

China Office (Hangzhou)
3rd Floor, Building B, #18 Tang Miao Road
Hua Xing Modern Industrial Park
Hangzhou, China 310012
Voice: 86-571-8684-9591

China Office (Shenzhen)
5th Floor, Langfeng Building
#2 Ke fa Rd, Nan Shen High Tech Industrial
Park (Central) Shenzhen, China 518057
Voice: 86-755-2601-4600



GXV3500

1-Channel IP Video Encoder & Decoder

- Single channel video encoder + decoder 2-in-1 combo device
- H.264 ONVIF compliant
- Rich peripheral interfaces
- Composite (RCA) video output to TV
- Line-Out and Mic-in audio connections
- Functions as a Voice/Video Public Announcement System
- Integrated Power-over-Ethernet (802.3af)
- Support for 2-way audio paging using SIP/VoIP



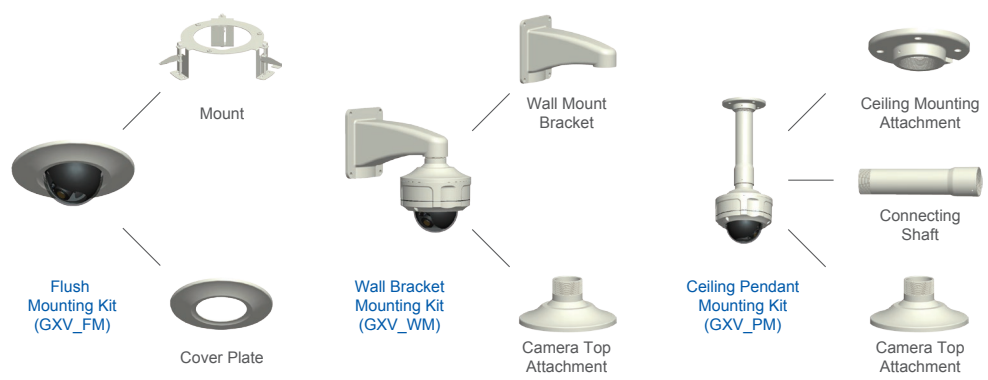
GXV3504

4-Channel Video Encoder

- 4 analog video inputs (BNC)
- H.264 ONVIF compliant 4-channel IP video encoder
- Rich peripheral interfaces
- 4 alarm input & outputs
- USB 2.0 port and SD slot for storage
- Flexible control
- Integrated Power-over-Ethernet (802.3af)
- Support for 2-way audio paging and SIP/VoIP

| Specifications | GXV3500 | GXV3504 |
|--|---|---|
| Video Decoder and TV out | Yes | No |
| Video Compression | H.264, JPEG, Motion JPEG | |
| Max Video Resolution | Encoding D1 Resolution: 704 x 576 (PAL), 704 x 480 (NTSC) Decoding (GXV3500 only): 720 x 576 (PAL), 720 x 480 (NTSC) | |
| Max Frame Rate in Max Video Resolution | Full Rate at D1 Resolution (30fps NTSC, 25fps PAL) | 4 Ports D1 Resolution at 15fps, or 2 Ports D1+2 Ports CIF Resolution at Full Rate, or 4 Ports CIF Resolution at Full Rate |
| Video Input | 1 BNC | 4 BNC |
| Alarm Input/Output | 1 | 4 |
| Audio Input/Output | 3.5mm Line-in & Line-out, 4 BNC for Audio Input (GXV3504 only) | |
| Audio Compression & VoIP | G.711a/u, SIP/VoIP | |
| PTZ Control | Yes | |
| Network Port | 10M/100M Network Port with Integrated PoE | |
| Peripheral Ports | RS485 | RS485, RS232, SD, USB |
| Pre-/post Alarm Buffer/Snapshots | 24MB (8MB for GXV3500) Alarm Buffer, Snapshots Triggered by Event, Sent via Email/FTP | |
| Multi-streaming-rate | Yes | |
| Security | Optional date/time watermark, HTTPS, Password | |

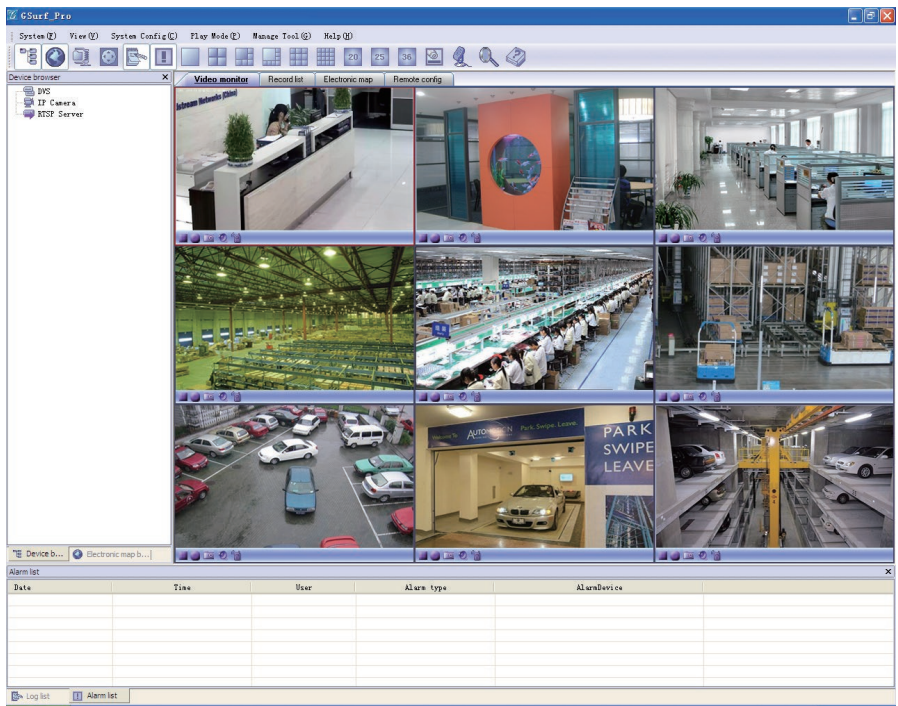
GXV3662_HD & GXV3662_FHD Accessories



GSurf Pro

Video Management Software

Our free video management software that provides one-stop control for devices, video recording and alarm events. GSurf Pro can be used to monitor, search and record up to 36 cameras simultaneously. Video can also be managed locally or remotely via the controlled server with Client/Server architecture.



Surveillance Product Lines

- Indoor Box Cameras
- Fixed Dome & Cube Cameras
- Outdoor Tube Cameras
- Outdoor Dome Cameras
- IP Video Encoders & Decoder
- Video Management Software

Outdoor Cameras

Outdoor Cameras

Indoor Cameras

Network Video Recorder



GXV3610_HD/GXV3610_FHD

Day/Night HD Fixed Dome IP Camera

- H.264 ONVIF compliant infrared HD (720p and 1080p)
- IP66 weatherproof
- 1/3" 1.2M and 3.1M pixel CMOS sensor with excellent wide dynamic range
- Day/night mode with light sensor and mechanical IR_CUT
- Integrated Power-over-Ethernet (802.3af)
- Supports e-PTZ function on Chrome, Firefox and IE for video preview



GXV3662_HD/GXV3662_FHD

Vandal-Resistant & Weatherproof HD IP Camera

- H.264 ONVIF compliant HD (720p and 1080p)
- Vandal-resistant, tampering proof, IP66 weatherproof
- 1/3" 1.2M and 3.1 pixel CMOS sensor
- Excellent wide dynamic range and low light sensitivity
- Day/night mode with light sensor and mechanical IR_CUT
- Integrated Power-over-Ethernet (802.3af)
- Integrated fan
- Flexible installation/mounting options
- Support for 2-way audio paging and SIP/VoIP



GXV3672_HD/3672_HD_36

Outdoor Day/Night & Weatherproof HD (720p) IP Camera

- H.264 ONVIF compliant infrared HD (720p)
- IP66 weatherproof
- 1/3" 1.2M pixel CMOS sensor with excellent wide dynamic range
- Day/night mode with light sensor and mechanical IR_CUT
- Integrated Power-over-Ethernet (802.3af)
- Supports e-PTZ function on Chrome, Firefox and IE for video preview



GXV3672_FHD/GXV3672_FHD_36

Outdoor Day/Night & Weatherproof Full HD (1080p) IP Camera

- H.264 ONVIF compliant infrared full HD (1080p)
- IP66 weatherproof
- 1/3" 3.1M pixel CMOS sensor with excellent wide dynamic range
- Day/night mode with light sensor and mechanical IR_CUT
- Integrated Power-over-Ethernet (802.3af)
- Supports e-PTZ function on Chrome, Firefox and IE for video preview



GXV3674_HD_VF/GXV3674_FHD_VF

Outdoor Day/Night Vari-Focal HD (720p) IP Camera

- H.264 ONVIF compliant infrared HD (720p)
- 2.8mm-12mm Vari-Focal lens with DC-IRIS
- IP66 weatherproof
- 1/3" 1.2M & 3.1M pixel CMOS sensor with excellent wide dynamic range
- Day/night mode with light sensor and mechanical IR_CUT
- Integrated Power-over-Ethernet (802.3af)
- Supports e-PTZ function on Chrome, Firefox and IE for video preview



GXV3611_HD

Indoor HD (720p) Fixed Dome IP Camera

- H.264 ONVIF compliant HD (720p)
- 2M pixel Aptina CMOS sensor
- Integrated Power-over-Ethernet (802.3af)
- Support for 2-way audio paging and SIP/VoIP
- Integrated microphone and speaker
- Supports e-PTZ function on Chrome, Firefox and IE for video preview



GXV3651_FHD

Full High Definition (1080p) IP Camera

- H.264 ONVIF compliant Full HD (1080p)
- Advanced 1/2.5" 5M pixel CMOS sensor
- Integrated IR_CUT and light sensor for low light and night condition
- Embedded Image Sensor Processing (ISP) technology
- Support for 2-way audio paging and SIP/VoIP
- Integrated Power-over-Ethernet (802.3af)
- Alarm and audio inputs & outputs, RS485 connection
- Onboard backup available via USB 2.0 port and SD slot
- Support e-PTZ function on Chrome, Firefox and IE for video preview



GVR3550

Network Video Recorder (NVR)

- Up to 24 channels of 720p or 12 channels of 1080p audio/video real-time recording
- Up to 16TB of storage, up to 4 SATA 3.5" HDDs supported (HDDs not included)
- Automatic Discovery of IP cameras on the local network
- Fully customizable recording rules: time-based, event-based, manual or automatic
- 1 RJ45 10M/100M/1000M network interface
- 1 HDMI and 1 VGA output for full HD local playback
- Alarm-in and Alarm-out port for external integration and future expansion
- 2 USB ports for use of USB keyboard, USB mouse or for system backup
- Live View of up to 16 channels
- Supports all Grandstream cameras, encoders and decoders; and all 3rd party ONVIF cameras
- Supports RAID 0 and RAID 1
- Complete security features including role-based access control, event/system logs and hard drive encryption
- Automatic recording resumption after power failure



| Specifications | GXV3610_HD/3610_FHD | GXV3662_HD/3662_FHD |
|----------------------------------|---|---|
| Video Compression | H.264, JPEG, Motion JPEG | |
| Image Sensor | Aptina 1.2 & 3.1 Megapixel 1/3", CMOS Sensor | Aptina 1.2 & 3.1 Megapixel, 1/3" CMOS sensor |
| Lens | 1/3", M12 MEGA, f=3.6mm, F1.8 | 1/3", f=3.3-12mm, DC-IRIS |
| Max Video Resolution | 1280 x 960 | 2048 x 1536 |
| Audio In/Out Port | 3.5mm Line-Out | Yes, Line-in & Line-Out |
| PoE | Yes | |
| Alarm Input/Output | N/A | Input: Vin< 15V; Output: 125VAC/0.5A, 30VDC/2A, Normal Open |
| Microphone and Speaker | Built-In Microphone, SIP/VoIP with G.711 codec | N/A |
| Mechanical IR_CUT | Yes | |
| Network Port | 10M/100M Network Port with Integrated PoE | |
| Pre-/post Alarm Buffer/Snapshots | 24MB (GXV3610: 8MB) Buffer, Event-triggered snapshots sent via Email/FTP, Stored in SD Card (GXV3662) | |
| Operating Temperature | -20°C ~ 50°C (-4°F ~ 122°F) | -30°C ~ 50°C (-22°F ~ 122°F) |
| Multi-streaming-rate | Yes | |
| Security | Optional date/time watermark, HTTPS, Password | |

| Specifications | GXV3672_HD/ 3672_HD_36 | GXV3672_FHD/3672_FHD_36 | GXV3674_HD/FHD_VF |
|----------------------------------|--|--|---|
| Video Compression | H.264, JPEG, Motion JPEG | | |
| Image Sensor | Aptina 1.2 Megapixel 1/3" CMOS Sensor | Aptina 3.1 Megapixel 1/3" CMOS Sensor | Aptina 1.2 & 3.1 Megapixel 1/3" CMOS Sensor |
| Lens | 1/3", M12 MEGA, f=8mm, F1.8 (f=3.6mm, F2.0 for 3672_HD_36) | 1/3", M12 MEGA, f=8mm, F1.8 (f=3.6mm, F2.0 for 3672_HD_36) | 1/3", MEGA, f=2.8-12mm, F1.4 |
| Max Video Resolution | 1280 x 960 | 2048 x 1536 | 2048 x 1536 |
| Audio In/Out Port | 3.5mm Line-in & Line-out | | |
| PoE | Yes | | |
| Microphone, Speaker | N/A | | |
| Mechanical IR_CUT | Yes | | |
| Network Port | 10M/100M Network Port with Integrated PoE | | |
| Pre-/post Alarm Buffer/Snapshots | HD Models: 8MB / FHD Models: 3MB, Alarm Buffer, Snapshots Triggered by Event, Sent via Email/FTP | | |
| Operating Temperature | -20°C ~ 50°C (-4°F ~ 122°F) | | |
| Multi-streaming-rate | Yes | | |
| Security | Optional date/time watermark, HTTPS, Password | | |

| Specifications | GXV3611_HD | GXV3651_FHD |
|----------------------------------|--|--|
| Video Compression | H.264, JPEG, Motion JPEG | |
| Image Sensor | Aptina 2 Megapixel 1/3.2" CMOS Sensor | Aptina 5 Megapixel 1/2.5" CMOS Sensor |
| Lens | 1/3", M12 MEGA, f=2.8mm, F2.0 | 1/2.5", 4.5~10mm, Varifocal Lens, Mega, Manual-Iris, CS (DC-IRIS optional) |
| Max Video Resolution | 1600 x 1200 | 2560 x 1920 |
| Audio In/Out Port | 3.5mm Line-in & Line-out | |
| PoE | Yes | |
| Microphone and Speaker | Built-in Speaker and Microphone; SIP/VoIP with G.711 Codec | Built-in Microphone; SIP/VoIP with G.711 Codec |
| Mechanical IR_CUT | N/A | Yes |
| Alarm Input/Output | Input: Vin<15V; Output: 125VAC/0.5A, 30VDC/2A, Normal Open | |
| Peripheral and Network Ports | 10M/100M Network Port with Integrated PoE, RS485, SD, USB 2.0 (GXV3651_FHD only) | |
| Pre-/post Alarm Buffer/Snapshots | 24MB Alarm Buffer, Event-triggered Snapshots Sent via Email/FTP, & Stored in SD Card (GXV3651_FHD) | |
| Multi-streaming-rate | Yes | |
| Security | Optional date/time watermark, HTTPS, Password | |

| Specifications | GVR3550 |
|--------------------|---|
| Video Recording | Up to 24 channels of 720p (1280x720) or 12 channels of 1080p (1920x1080) |
| Recording Modes | Continuous mode, record by schedule, event trigger, manual |
| Video Compression | H.264 baseline, main or high profile |
| Audio Compression | G.711 (u-law and a-law) |
| Live View | Up to 16 channels of VGA, 4 channels of 720p, or 2 channels of 1080p via HDMI or VGA output |
| Storage | Up to 16TB |
| Storage Redundancy | Backup to USB or network backup |
| RAID | RAID 0 or RAID 1 |
| HDMI | 1 x HDMI |
| VGA | 1 x VGA |
| Line In/Line Out | 1 x RCA input, 1 x RCA output |
| Network Ports | 1 x 10/100/1000Mbps auto-sensing RJ45 port |
| Internal HDD | Up to 4 3.5" SATA hard drives with maximum 16TB storage (HDDs not included) |
| USB ports | 2 x USB 2.0 ports (can be used for USB mouse and keyboard, etc) |
| Security | Optional date/time watermark, HTTPS, Password |